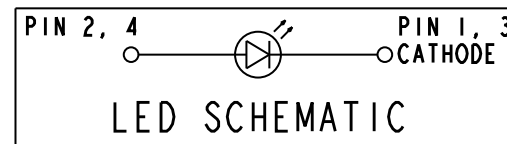


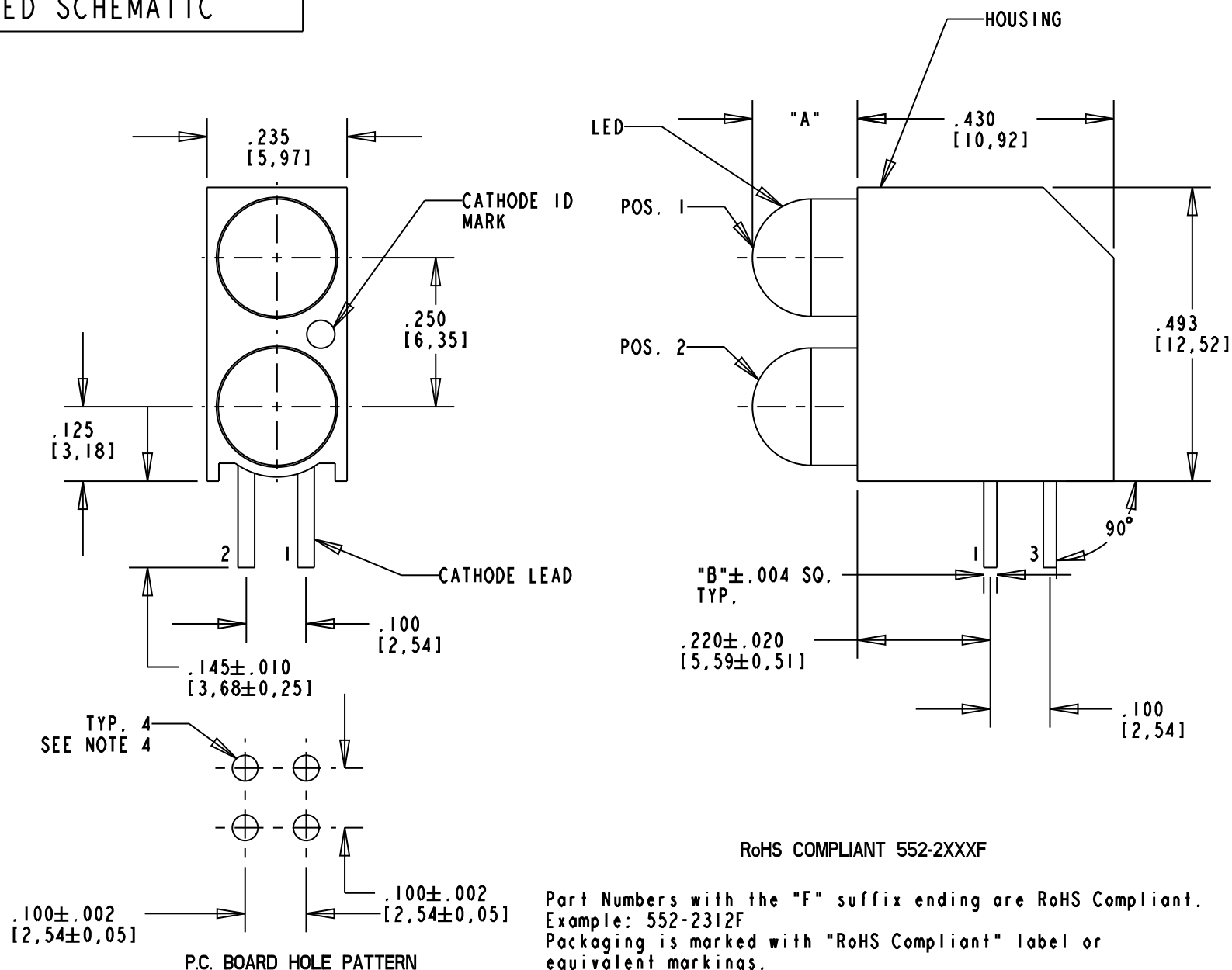
DIALIGHT PART NUMBER	POSITION 1	POSITION 2	DIM "A"	DIM "B"
552-2312F	HI. EFF. RED WATER CLEAR	GREEN WATER CLEAR	.180	.018
552-2322F	GREEN WATER CLEAR	GREEN WATER CLEAR	.180	.018
552-2333F	YELLOW WATER CLEAR	YELLOW WATER CLEAR	.180	.018
552-2380F	BLUE WATER CLEAR	BLANK	.176	.020
552-2388F	BLUE WATER CLEAR	BLUE WATER CLEAR	.176	.020
552-2466F	RED WATER CLEAR	RED WATER CLEAR	.180	.025

REV	ECN NO	REVISIONS	DRN	CKD	APP	DATE
A	—	NEW RELEASE	AJF	KLJ	JLC	8-18-09



NOTES:

- LED LEAD DIMENSIONS SHOWN AND MESURED AT HOUSING EXIT.
- LEADS TO FIT INTO HOLES SPACED AS PER PATTERN.
- PIN NUMBERS FOR REFERENCE ONLY, DESIGNATION NON-EXISTENT ON PART.
- HOLE DIA. .040±.002 FOR LED LEADS .018 SQUARE, .043±.002 DIA. FOR LEADS .020 SQUARE, AND .050±.002 DIA. FOR LEADS .025 SQUARE.
- DIALIGHT PART NUMBER: 552-2XXXF.
- ATTENTION: OBSERVE PRECAUTIONS FOR HANDLING ELECTROSTATIC SENSITIVE DEVICES. FOR EYE SAFETY DO NOT STARE DIRECTLY INTO THE LIGHT BEAM OF THESE LED DEVICES AT CLOSE RANGE.



RoHS COMPLIANT 552-2XXXF

Part Numbers with the "F" suffix ending are RoHS Compliant. Example: 552-2312F
Packaging is marked with "RoHS Compliant" label or equivalent markings.
Parts can be wave soldered, dip soldered or hand soldered using typical lead-free soldering process with max 260°C temp. for 5 sec.

OPERATING CHARACTERISTICS AT 25°C AMBIENT

LED COLOR	TEST CONDITION (mA)	PEAK EMISSION WAVELENGTH (nm)	VIEWING ANGLE (°) 2θ1/2	LUMINOUS INTENSITY (mcd)		FORWARD VOLTAGE (V)		REVERSE CURRENT (μA)
				MIN	TYP	TYP	MAX	MAX
HI. EFF. RED	20	635	24	80	125	2.2	3.0	100 @ V _R = 5V
GREEN	20	565	24	80	120	2.3	3.0	100 @ V _R = 5V
YELLOW	20	583	24	80	140	2.2	3.0	100 @ V _R = 5V
BLUE	20	470	30	520	1010	3.8	4.0	100 @ V _R = 5V
RED	1.0	645	24	5	10	1.6	1.8	100 @ V _R = 5V

ABSOLUTE MAXIMUM RATINGS AT 25°C AMBIENT	LED COLOR					UNITS
	HI. EFF. RED	GREEN	YELLOW	BLUE	RED	
POWER DISSIPATION	135	135	85	120	87	mW
CONTINUOUS FORWARD CURRENT	30	30	20	30	30	mA
PEAK FORWARD CURRENT (10 μs PULSE WIDTH)	500	500	500	100	300	mA
DERATING LINEAR FROM 25°C (50°C:RED & YELLOW); (40°C:BLUE)	1.8	1.8	1.6	0.5	0.5	mA/°C
REVERSE VOLTAGE (I _R =100μA)	5					V
LEAD SOLDERING TEMP. (5 SEC., 1/16" FROM BASE)	260					°C
OPERATING TEMPERATURE	-55 TO +100	-20 TO +100	-55 TO +100	-40 TO +80	-20 TO +100	°C
STORAGE TEMPERATURE	-55 TO +100					°C



ATTENTION:
OBSERVE PRECAUTIONS FOR
HANDLING ELECTROSTATIC
SENSITIVE DEVICES

THIS DRAWING AND THE CONTENTS HEREIN ARE CONFIDENTIAL AND THE SOLE PROPERTY OF DIALIGHT. REPRODUCTION OF THIS DRAWING OR CONSTRUCTION OF ANY PARTS WITHIN THIS DRAWING ARE FORBIDDEN WITHOUT THE WRITTEN CONSENT OF DIALIGHT.		
SCALE: 4.000	DRAWING NUMBER	REV
ALL DIM'S IN: INCHES (MM)	C-17766	A
TOLERANCES: UNLESS OTHERWISE SPECIFIED	TITLE 5mm BI-LEVEL CBI RoHS COMPLIANT	
FRACTIONS: ±1/64	MATERIAL	
DECIMALS (.XX): ±.02	Dialight	
DECIMALS (.XXX): ±.015	1501 ROUTE 34 SOUTH FARMINGDALE, NJ 07727	
ANGLES: ±3°	FSCM 83330	
FINISH:	SHEET 1 OF 1 FAMILY TABLE:	